

Second Generation Intel-Powered Classmate PC Quick Guide:



Classroom Collaboration (Mythware e-Learning Class*)—Teacher



Student Not
Connected to
Network or Teacher



Student Connected to
Network and Teacher

eLearning class for classmate PC enables teachers to wirelessly manage student PCs in the classroom:

- **Share** your screen, text, voice, video, or files with students
- **Monitor and control** student machines
- **Record and play back** sessions
- **Manage** online quizzes and tests

To Connect with Your Class for the First Time

1. **Students:**

Set your name to identify yourself at the Virtual Class (right-click on the Student Program Icon in the taskbar ▶ Set Name).

2. **Teacher and Students:**

Connect to the wireless network.

3. **Students:**

Select your teacher from the Session List and click Connect.

If the Session List doesn't appear:

- Right-click on the Student Program Icon in the taskbar ▶ Connect
- Click Connect and join class on the Student Program Floating Bar.

4. **Teacher:**

Waiting Connection List appears. Select students and click the Accept button.

Student Status Icons will appear. Click the lock button to keep students connected.

To Connect with Your Class after the First Time

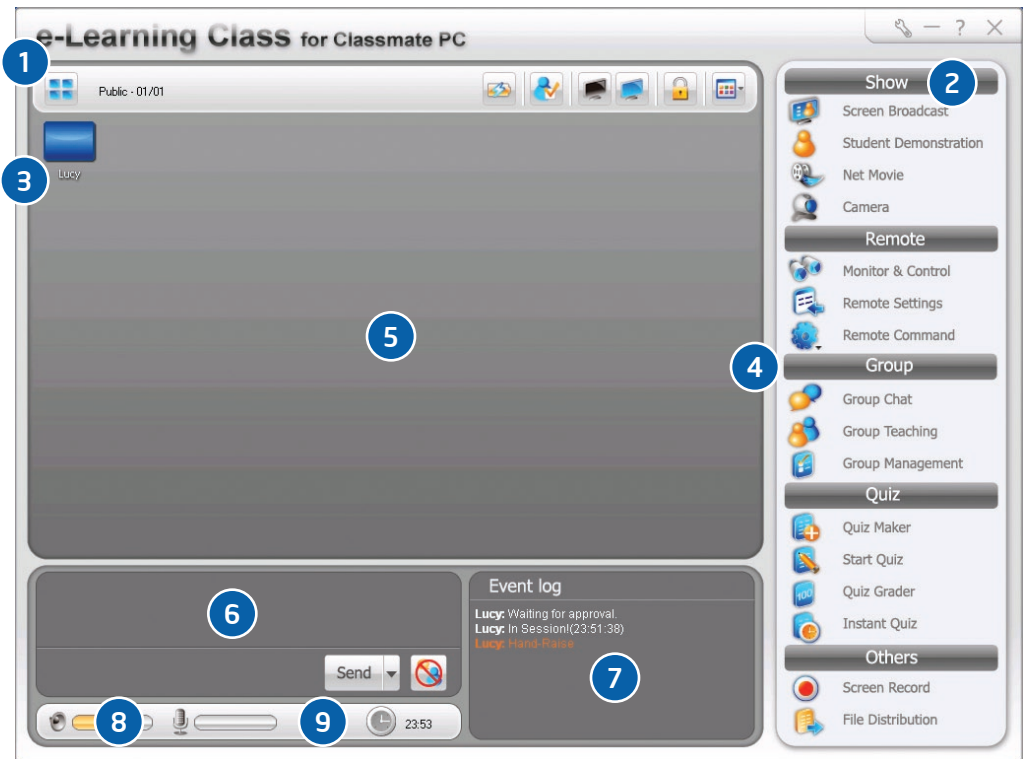
1. **Teacher and Students:**

Connect to the wireless network.

2. **Teacher:**

Start and log in to the Master Program. With no students selected, click the lock button. All students are connected and locked.

Interacting with Your Class



1. **Management Tools**—Administrate and display class status.
2. **Option**—Many useful options to control and configure software functions.
3. **Student Icon**—Display current students' status based on teacher interaction with them.
4. **Function Bar**—Interact with one or more students at the class.
5. **Class Model**—Display class students and let the teacher interact with them.
6. **Chat Window**—Send messages to the class or selected students.
7. **Event Log**—View event history occurred during the current class session.
8. **Volume Controls**—Control speakers and microphone volume.
9. **Time Clock**—Show teacher's PC time.

If you minimize the main window, you can still access key functions by either right-clicking the program icon in the taskbar or by the program toolbar at the top of your screen.



Master Program Icon



Toolbar

Most Common Teacher Functions

FUNCTION COMMAND BAR

STUDENT STATUS ICON DISPLAYED

Sharing:



Lead the class by showing students what is on your screen.



Show a student's work to the class or let them lead the class.



Play movie on teacher PC and display it on every student PC.



Start a web conference with the students.



Record all screen changes and play them back at a later time.



Put lecture and/or homework files onto all student PCs.



Monitor and Control:



Make sure students are on task. Right-click and select remote control to take over.



Start program for students.



Prevent student's use of PC during lecture or other activity.



Instantly connects students to the class.



Collaboration:



Students can share with each other in small groups (more details in manual).



Grading:



Administer formative or summative assessments such as a quiz or test.



For more information, please visit: www.intel.com/go/classmatepc
www.classmatepc.com

Copyright © 2008, Intel Corporation. All rights reserved. Intel, the Intel logo, Intel. Leap ahead., the Intel. Leap ahead. logo, and Pentium are trademarks of Intel Corporation in the U.S. and other countries.

*Other names and brands may be claimed as the property of others.

0208/MG/CMD/XX/PDF 319427-002US