

# Second Generation Intel-Powered Classmate PC Quick Guide:

## Play Camera








Play Camera is an Intel-powered classmate PC software utility that lets students use the camera included on the Intel-powered classmate PC. With this utility, students can take pictures and videos, storing them on the Intel-powered classmate PC and reproducing them with available commercial software.

### To start Play Camera:

Search on the desktop for the “Play Camera” icon;  
Double-click on it to open the Play Camera software.



Play Camera Icon

Icon	Function
	Open the folder in which pictures are saved by default.
	Stop preview on main screen and reduce Play Camera to toolbar mode.
	Change between front and rear camera on the Intel-powered classmate PC.
	Take a picture.
	Start or stop recording a video.



Play Camera Main Screen



Play Camera Toolbar Mode

# Camera settings



With Play Camera, you can change settings, resolution, and paths to save your photos and videos. On the main screen, right-click to open the emerging menu where students find the next options.

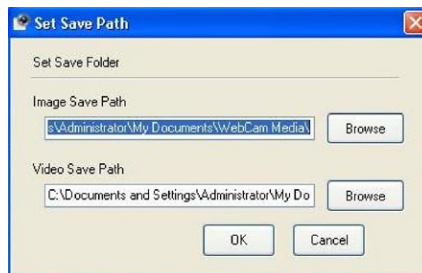
## Menus



**Camera Settings:** In this menu, students can change some values—such as brightness or contrast—and reset the camera’s default settings.



**Resolution and Device Settings:** This menu allows you to change the main resolution for the camera, as well as change input for video and audio devices.



**Set Save Path:** Here, you can specify where to save your photos and videos.

For more information, please visit: [www.intel.com/go/classmatepc](http://www.intel.com/go/classmatepc)  
[www.classmatepc.com](http://www.classmatepc.com)