

Second Generation Intel-Powered Classmate PC Quick Guide:



Display Switcher Utility (Screen Resolution)

Display Switcher is an Intel-powered classmate PC software utility that enables you to quickly change your screen resolution. By default, your display is 800 x 480 pixels. However, with different applications, you may wish to view the display at higher or lower resolutions. Because the screen itself is 800 x 480 pixels, when displaying at higher resolutions, you must either scroll to view different portions of the display or you can fit it to the screen. This allows you to watch the entire screen, even if it will have a vertical compressed aspect ratio.

There are three ways to start Display Switcher:

1. Double-click the **Display Switcher** icon in the taskbar tray.



Display Switcher Icon

2. Start ▶ All Programs ▶ Intel Education Stack ▶ Display Switcher.

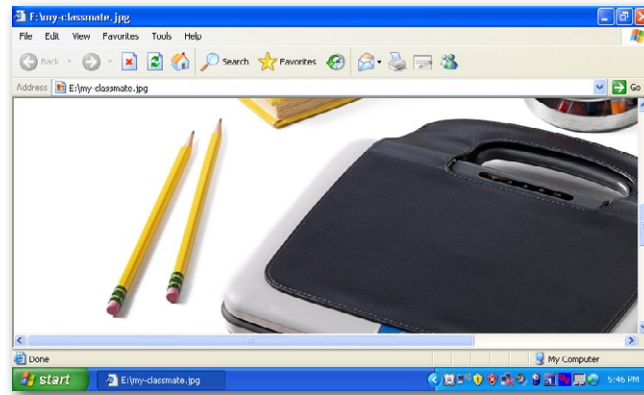
3. Right-click the **Tray Icon** and select Switch Resolution.

Once started, you can select any of the following resolutions:

- Actual size mode
- Compressed mode
- Super compressed mode
- Pan mode



Here are examples of each option.

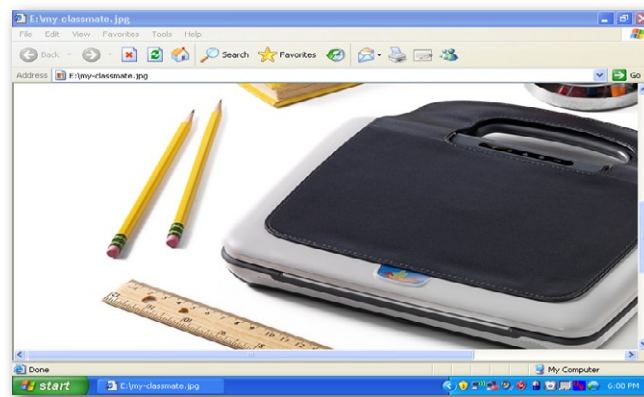


Actual size mode:

Screen resolution of 800 x 480.

Most-used display mode.

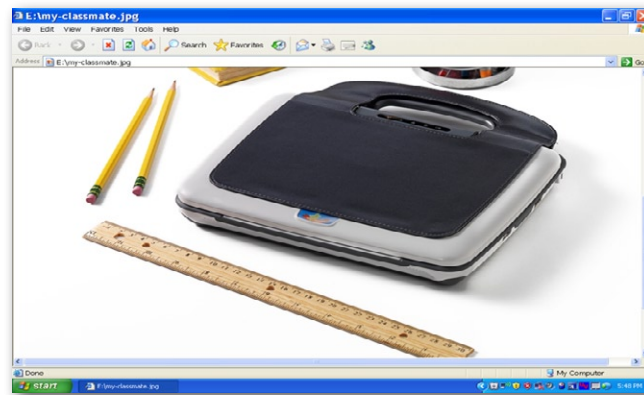
Use scroll bar to see lower portion of page.



Compressed mode:

Screen resolution of 800 x 600 downsampled to fit the screen size.

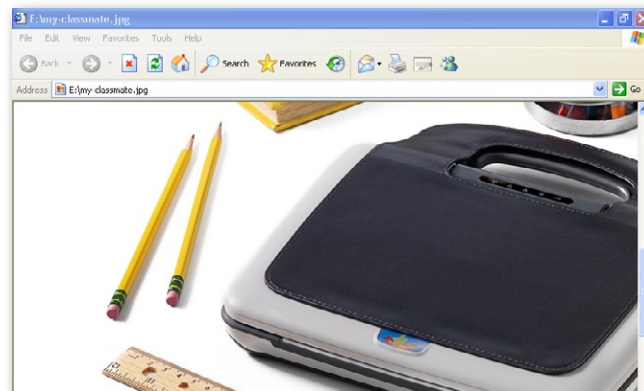
Entire screen visible and no scrolling required, but display is vertically compressed.



Super compressed mode:

Screen resolution of 1024 x 768 downsampled to fit the screen size.

Entire screen visible. Also, there is no need to scroll, but display is vertically and horizontally compressed.



Pan mode:

Screen resolution of 800 x 600 displayed as pan style.

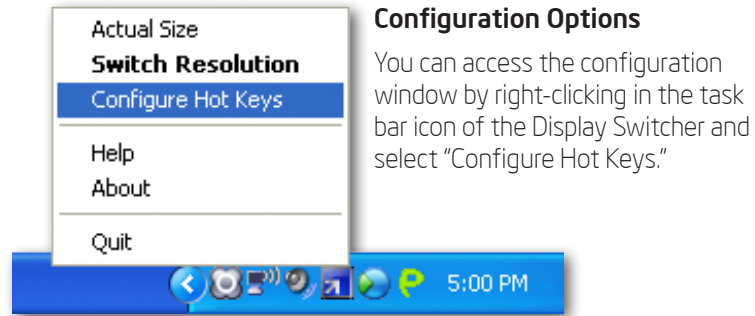
You will need to scroll the mouse cursor down or up to see the rest of the screen.

Hot Keys

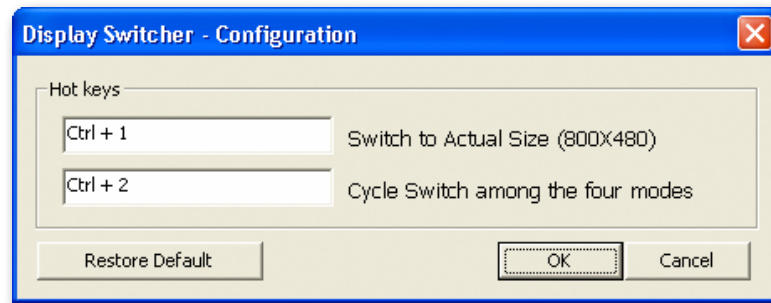
Two hot keys are defined as default:

- Ctrl+1: Switch to native mode of the LCD (800x480).
- Ctrl+2: Cycle switch among the four supported display modes.

You can view the values of the hot keys in the configuration window



There you may modify Hot Keys or restore the default values.



For more information, please visit: www.intel.com/go/classmatepc
www.classmatepc.com